

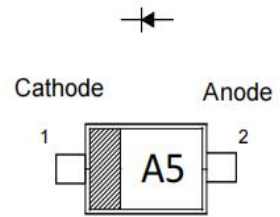


### BAP51-02 GENERAL PURPOSE PIN DIODES

#### FEATURES

- Low diode capacitance
- Low diode forward resistance

#### MARKING: A5



SOD-523

#### Maximum Ratings and Electrical Characteristics, Single Diode @Ta=25°C

Parameter	Symbol	Limit	Unit
Continuous Reverse Voltage	$V_R$	60	V
Continuous Forward Current	$I_F$	50	mA
Power Dissipation	$P_D$	150	mW
Thermal Resistance from Junction to Ambient	$R_{\theta JA}$	833	°C/W
Junction Temperature	$T_j$	-55~+150	°C
Storage Temperature	$T_{STG}$	-55~+150	°C

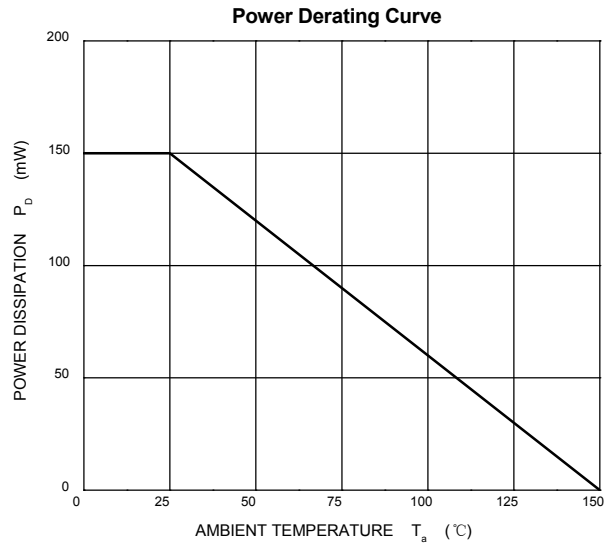
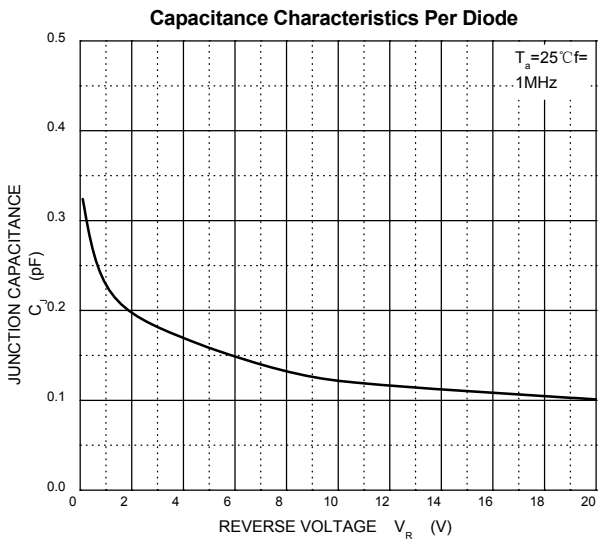
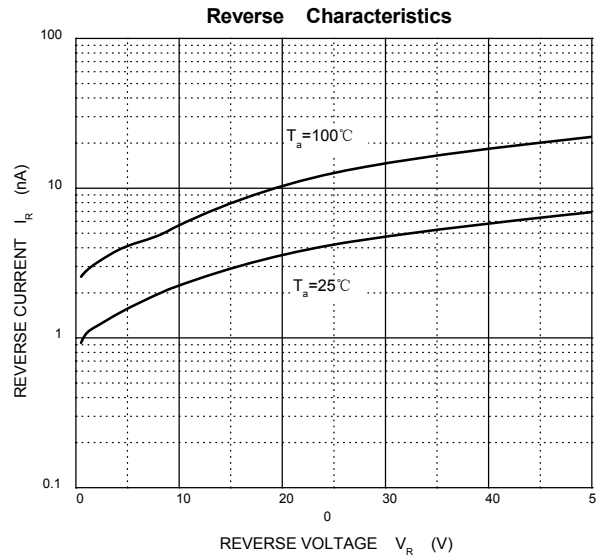
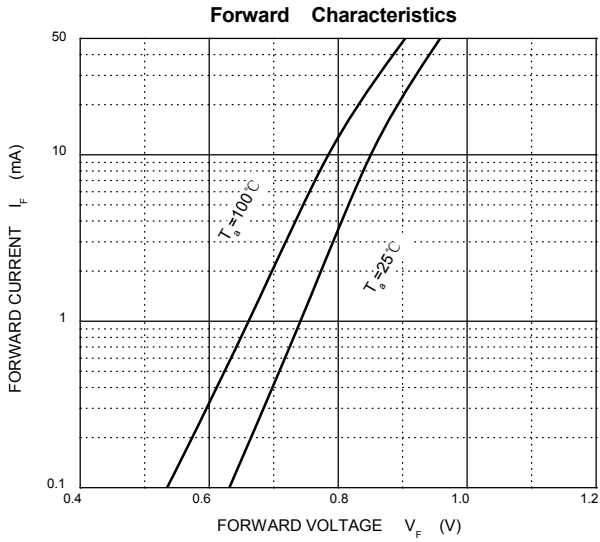
#### Electrical Ratings @Ta=25°C

Parameter	Symbol	Min	Typ	Max	Unit	Conditions
Continuous reverse voltage	$V_R$	50			V	$I_R=10\mu A$
Forward voltage	$V_F$			1.1	V	$I_F=50mA$
Reverse current	$I_R$			100	nA	$V_R=50V$
Diode capacitance	$C_{d1}$		0.4*		pF	$V_R=0V, f=1MHz$
	$C_{d2}$			0.55	pF	$V_R=1V, f=1MHz$
	$C_{d3}$			0.35	pF	$V_R=5V, f=1MHz$
Diode forward resistance	$r_D$			9	$\Omega$	$I_F=0.5mA, f=100MHz; note1$
	$r_D$			6.5	$\Omega$	$I_F=1mA, f=100MHz; note1$
	$r_D$			2.5	$\Omega$	$I_F=10mA, f=100MHz; note1$

Note 1. Guaranteed on AQL basis: inspection level S4,AQL 1.0.



## Typical Characteristics

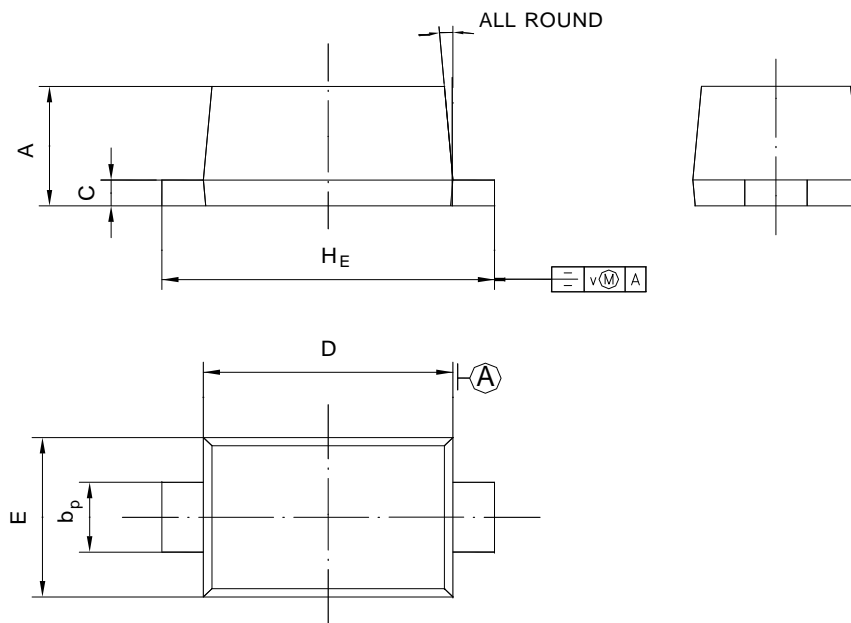




## PACKAGE OUTLINE

Plastic surface mounted package; 2 leads

SOD-523



UNIT	A	b <sub>p</sub>	C	D	E	H <sub>E</sub>	V	∠
mm	0.68 0.58	0.4 0.3	0.135 0.100	1.25 1.15	0.85 0.75	1.7 1.5	0.1	5°